





**AWM.**  
**AMAROO**  
HOUSE FABRIC RANGE

# BEACHCOMBER | WARWICK

## CATEGORY 1

Collection (s)	Augustus
Colour (s)	Aegean, Amazon, Armour, Birch, Blush, Candy, Chili, Copper, Dew, Earth, Ebony, Ecru, Eggplant, Flint, Fuchsia, Fudge, Glacier, Grey, Gunmetal, Ink, Ladybird, Lagoon, Lime, Linen, Madder, Marmalade, Marshmallow, Meadow, Midnight, Mustard, Ocean, Olive, Pacific, Pimpernel, Plum, Porcelain, Pumice, Reef, Russet, Seaglass, Sunshine, Thistle, Turmeric, Tuscany, Willow, Wolf, Zinc
Product Type (s)	Drapery   Upholstery (Heavy Commercial )
Attributes	Encore Recycled
Styles	Plain, Texture, Modern, Industrial
Composition	70% Recycled Wool 25 % Polyamide 5 % Acrylic
Pattern Match	No
Pattern Repeat (cm)	Plain
Railroaded	Plain Fabrics marked Railroaded 'Plain' can be cut in either direction at the discretion of the manufacturer, and in consultation with the customer's preference. Fabric is sampled in the direction it comes up the roll (Non Railroaded ).
Continuous	No
Self-Weighted	No
Width (cm)	150
Roll Size (approx)	50m
Weight (gsm)	392
Origin	European
Stain Repellent	No
FIAA Care Label	<u>FIAA Care Label 3 – Non Pile Fabrics</u>
WCAA Care Label	<u>WCAA Care Label 2</u>
Usage	 Upholstery  Drapery  Cushion  Lamp Shade         Not suitable for roman blinds
Guarantee	3 Years in accordance with our product type and care instructions

## Test Results

Martindale (ISO 12947, 12kPA)	150,000 Cycles
Seam Slippage (mm) (ISO 13936-2, Load 180 )	Warp 3.3, Weft 2.9
Pilling Resistance (ISO 12945-2 )	4/5
Colourfastness to Light Xenon arc (ISO 105-B02, blue std 6 )	> 6
Colourfastness to Rubbing (ISO 105-X12)	Dry 5, Wet 4/5
Dimension Change - Laundering (%) (ISO 5077/ISO 6330.7BA )	Warp -1.4, Weft -4.8
Dimension Change - Hanging (%) (AS2663.1.B )	Warp 0.2, Weft 0.1
Free and Hydrolysed Formaldehyde (ISO 14184-1:1998)	Not Detectable
Flammability AS/NZS 1530.2 - 1993 Flammability Index (0-100) Spread Factor (0-40) Heat Factor (0 upward)	34 Length 24, Width 21 Length 10, Width 8
Flammability AS/NZS 1530.3 - 1999 Ignitability (0-20 ) Spread of Flame (0-10) Heat Involved (0-10) Smoke Developed (0-10)	7 0 0 3
Group Number AS5637.1	2

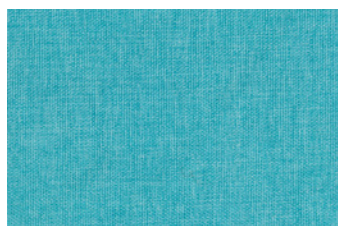
# BEACHCOMBER | WARWICK



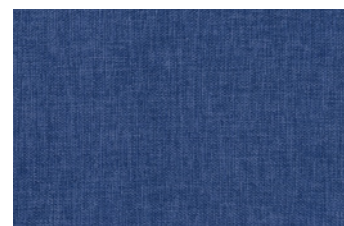
Beachcomber Aqua



Beachcomber Ash



Beachcomber Atlantic



Beachcomber Cobalt



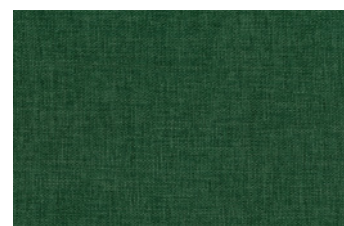
Beachcomber Driftwood



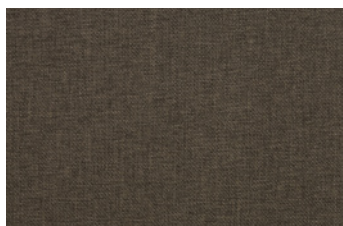
Beachcomber Fern



Beachcomber Flame



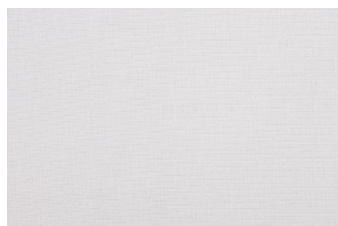
Beachcomber Forest



Beachcomber Fudge



Beachcomber Graphite



Beachcomber Ice



Beachcomber Kiwi



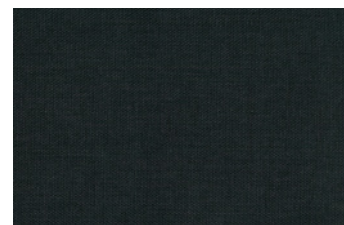
Beachcomber Magenta



Beachcomber Manuka



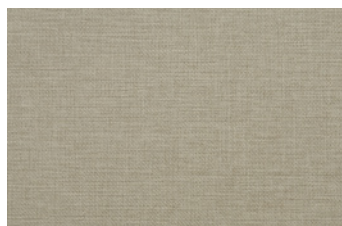
Beachcomber Marine



Beachcomber Midnight



Beachcomber Mist



Beachcomber Nougat



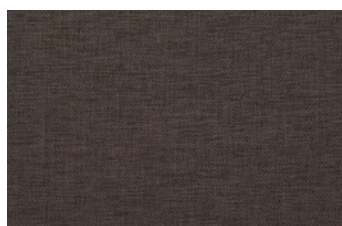
Beachcomber Oatmeal



Beachcomber Orchid



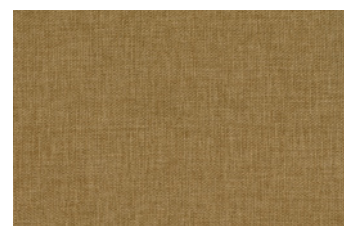
Beachcomber Pewter



Beachcomber Sable

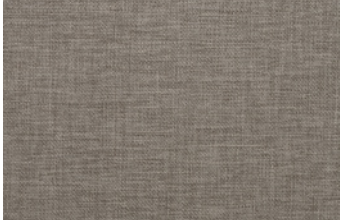


Beachcomber Smoke



Beachcomber Straw

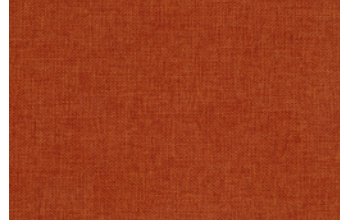
# BEACHCOMBER | WARWICK



Beachcomber Taupe




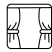


Beachcomber Teal



Beachcomber Terracotta

# BROOKLYN | WARWICK

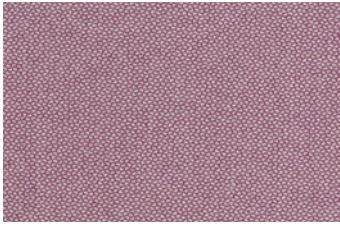
## CATEGORY 1

Collection (s)	Augustus
Colour (s)	Aegean, Amazon, Armour, Birch, Blush, Candy, Chili, Copper, Dew, Earth, Ebony, Ecru, Eggplant, Flint, Fuchsia, Fudge, Glacier, Grey, Gunmetal, Ink, Ladybird, Lagoon, Lime, Linen, Madder, Marmalade, Marshmallow, Meadow, Midnight, Mustard, Ocean, Olive, Pacific, Pimpernel, Plum, Porcelain, Pumice, Reef, Russet, Seaglass, Sunshine, Thistle, Turmeric, Tuscany, Willow, Wolf, Zinc
Product Type (s)	Drapery   Upholstery (Heavy Commercial )
Attributes	Encore Recycled
Styles	Plain, Texture, Modern, Industrial
Composition	70% Recycled Wool 25 % Polyamide 5 % Acrylic
Pattern Match	No
Pattern Repeat (cm)	Plain
Railroaded	Plain Fabrics marked Railroaded 'Plain' can be cut in either direction at the discretion of the manufacturer, and in consultation with the customer's preference. Fabric is sampled in the direction it comes up the roll (Non Railroaded ).
Continuous	No
Self-Weighted	No
Width (cm)	150
Roll Size (approx)	50m
Weight (gsm)	392
Origin	European
Stain Repellent	No
FIAA Care Label	<u>FIAA Care Label 3 – Non Pile Fabrics</u>
WCAA Care Label	<u>WCAA Care Label 2</u>
Usage	 Upholstery  Drapery  Cushion  Lamp Shade         Not suitable for roman blinds
Guarantee	3 Years in accordance with our product type and care instructions

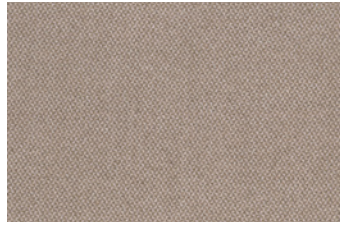
## Test Results

Martindale (ISO 12947, 12kPA)	150,000 Cycles
Seam Slippage (mm) (ISO 13936-2, Load 180 )	Warp 3.3, Weft 2.9
Pilling Resistance (ISO 12945-2 )	4/5
Colourfastness to Light Xenon arc (ISO 105-B02, blue std 6 )	> 6
Colourfastness to Rubbing (ISO 105-X12)	Dry 5, Wet 4/5
Dimension Change - Laundering (%) (ISO 5077/ISO 6330.7BA )	Warp -1.4, Weft -4.8
Dimension Change - Hanging (%) (AS2663.1.B )	Warp 0.2, Weft 0.1
Free and Hydrolysed Formaldehyde (ISO 14184-1:1998)	Not Detectable
Flammability AS/NZS 1530.2 - 1993 Flammability Index (0-100) Spread Factor (0-40) Heat Factor (0 upward)	34 Length 24, Width 21 Length 10, Width 8
Flammability AS/NZS 1530.3 - 1999 Ignitability (0-20) Spread of Flame (0-10) Heat Involved (0-10) Smoke Developed (0-10)	7 0 0 3
Group Number AS5637.1	2

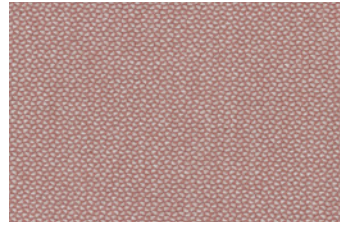
# BROOKLYN | WARWICK



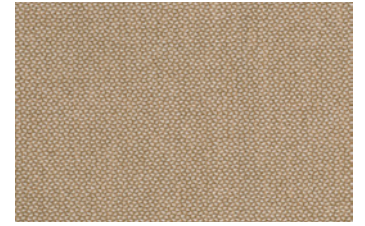
Brooklyn Aubergine



Brooklyn Biscuit



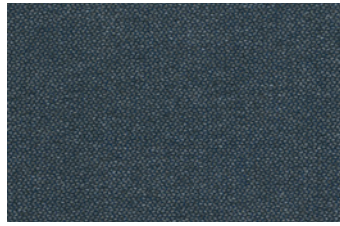
Brooklyn Blossom



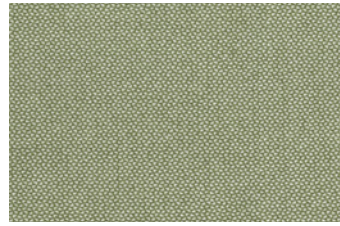
Brooklyn Honey



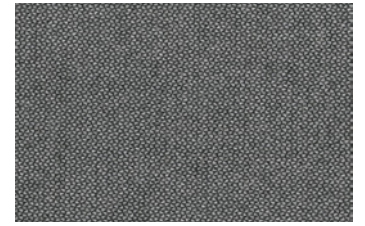
Brooklyn Ivory



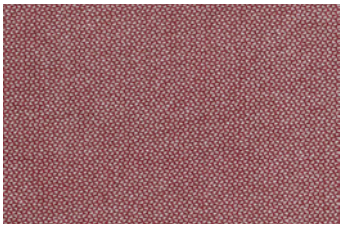
Brooklyn Navy



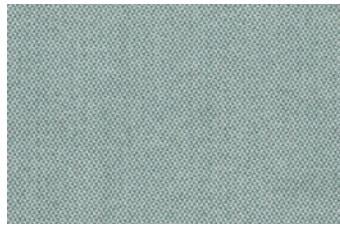
Brooklyn Olive



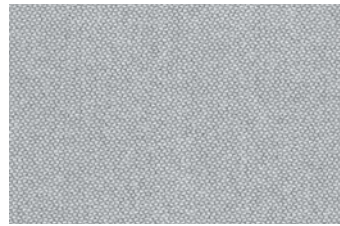
Brooklyn Onyx



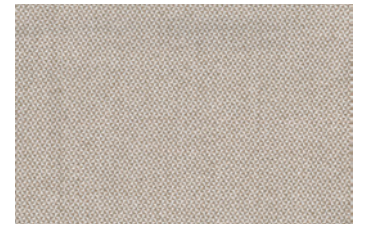
Brooklyn Rouge



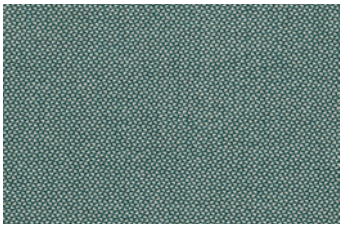
Brooklyn Seafoam



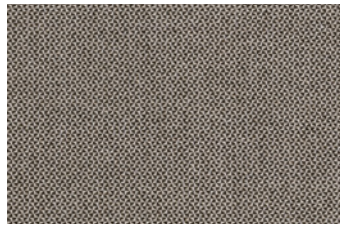
Brooklyn Silver



Brooklyn Stone







Brooklyn Teal



Brooklyn Walnut

# FELIX | WARWICK

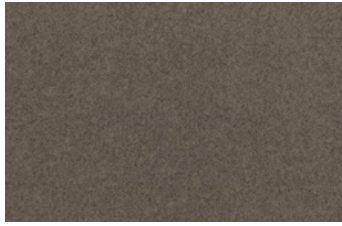
## CATEGORY 1

Collection (s)	Augustus
Colour (s)	Aegean, Amazon, Armour, Birch, Blush, Candy, Chili, Copper, Dew, Earth, Ebony, Ecru, Eggplant, Flint, Fuchsia, Fudge, Glacier, Grey, Gunmetal, Ink, Ladybird, Lagoon, Lime, Linen, Madder, Marmalade, Marshmallow, Meadow, Midnight, Mustard, Ocean, Olive, Pacific, Pimpernel, Plum, Porcelain, Pumice, Reef, Russet, Seaglass, Sunshine, Thistle, Turmeric, Tuscany, Willow, Wolf, Zinc
Product Type (s)	Drapery   Upholstery (Heavy Commercial )
Attributes	Encore Recycled
Styles	Plain, Texture, Modern, Industrial
Composition	70% Recycled Wool 25 % Polyamide 5 % Acrylic
Pattern Match	No
Pattern Repeat (cm)	Plain
Railroaded	Plain Fabrics marked Railroaded 'Plain' can be cut in either direction at the discretion of the manufacturer, and in consultation with the customer's preference. Fabric is sampled in the direction it comes up the roll (Non Railroaded ).
Continuous	No
Self-Weighted	No
Width (cm)	150
Roll Size (approx)	50m
Weight (gsm)	392
Origin	European
Stain Repellent	No
FIAA Care Label	<u>FIAA Care Label 3 – Non Pile Fabrics</u>
WCAA Care Label	<u>WCAA Care Label 2</u>
Usage	 Upholstery  Drapery  Cushion  Lamp Shade         Not suitable for roman blinds
Guarantee	3 Years in accordance with our product type and care instructions

## Test Results

Martindale (ISO 12947, 12kPA)	150,000 Cycles
Seam Slippage (mm) (ISO 13936-2, Load 180 )	Warp 3.3, Weft 2.9
Pilling Resistance (ISO 12945-2 )	4/5
Colourfastness to Light Xenon arc (ISO 105-B02, blue std 6 )	> 6
Colourfastness to Rubbing (ISO 105-X12)	Dry 5, Wet 4/5
Dimension Change - Laundering (%) (ISO 5077/ISO 6330.7BA )	Warp -1.4, Weft -4.8
Dimension Change - Hanging (%) (AS2663.1.B )	Warp 0.2, Weft 0.1
Free and Hydrolysed Formaldehyde (ISO 14184-1:1998)	Not Detectable
Flammability AS/NZS 1530.2 - 1993 Flammability Index (0-100) Spread Factor (0-40) Heat Factor (0 upward)	34 Length 24, Width 21 Length 10, Width 8
Flammability AS/NZS 1530.3 - 1999 Ignitability (0-20 ) Spread of Flame (0-10) Heat Involved (0-10) Smoke Developed (0-10)	7 0 0 3
Group Number AS5637.1	2

# FELIX | WARWICK



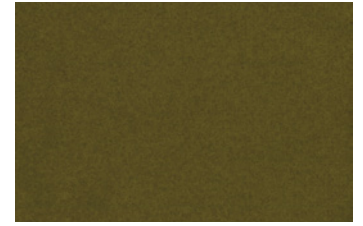
Felix Bark



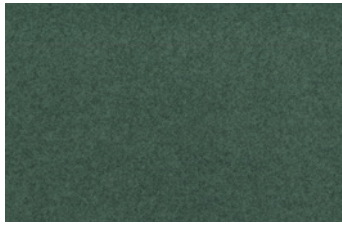
Felix Bone



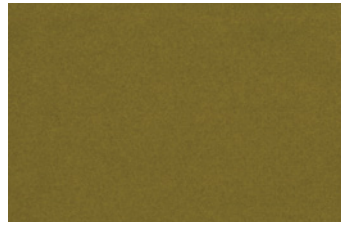
Felix Brunette



Felix Caper



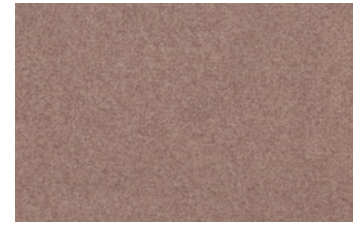
Felix Fern



Felix Goldenrod



Felix Mushroom



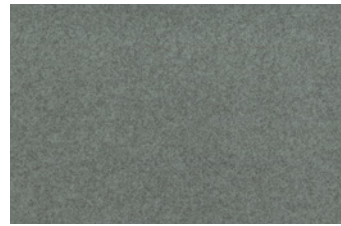
Felix Musk



Felix Navy



Felix Ocean



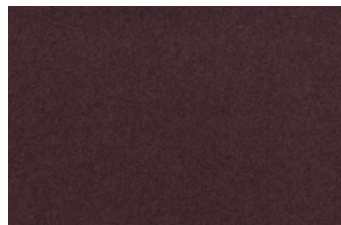
Felix Pebble



Felix Petrol



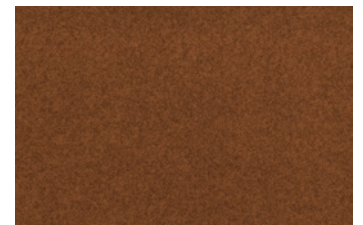
Felix Pigeon



Felix Plum



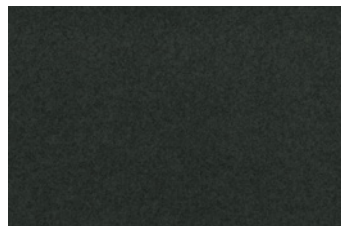
Felix Rose



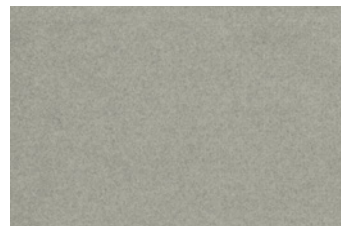
Felix Rust



Felix Salmon



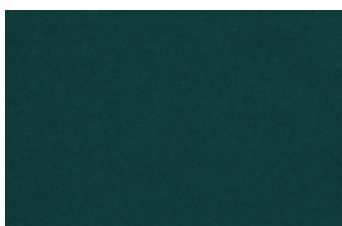
Felix Shadow



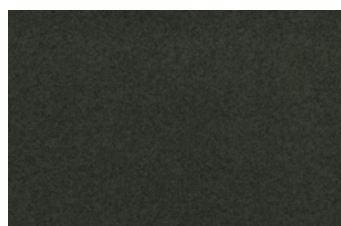
Felix Smoke



Felix Taupe



Felix Teal



Felix Thunder

# COCO | AWM HOUSE RANGE

CATEGORY 1

## Specifications

Usage	Heavy Commercial
Composition	100% Polyester
Pattern Repeat	Plain
Width	142cm
Railroaded	Yes
Care Label	3U
Swish	Yes
Metres on roll (approx.)	45 metres
Price Code	Orange
Fire Rated AS1530.3	Test results available upon request

## Test Results

Abrasion resistance - Wyzenbeek (ASTM D3597)	81,000 cycles
Seam slippage (ISO 13936-2, Load 180)	Warp: 4.2mm, Weft: 3.7mm
Pilling resistance (ISO 12945-2)	4
Colourfastness to light (ISO 105-B02, blue std 6)	6
Colourfastness to rubbing (ISO 105-X12:1993)	Dry: 4-5, Wet: 4-5
Free and hydrolysed formaldehyde (ISO 14184-1:1998)	Not detectable

## Fire Rating AS1530.3 Results

Ignition Time	Standard Error: 0.34, Mean: 8.78 min
Flame Propagation Time	Standard Error: Nil, Mean: Nil sec
Heat Release Integral	Standard Error: 4.1, Mean: 58.8 kJ/m2
Smoke Release, log d	Standard Error: 0.0540, Mean: -0.8718
Optical Density, d	Mean: 0.1397 / Metre
Number of Specimens Tested and Ignited	6

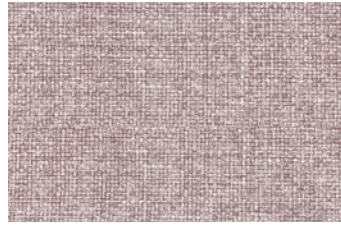
## Regulatory Indices:

Ignitability Index	11 (Range 0-20)
Spread of Flame Index	0 (Range 0-10)
Heat Evolved Index	2 (Range 0-10)
Smoke Developed Index	5 (Range 0-10)

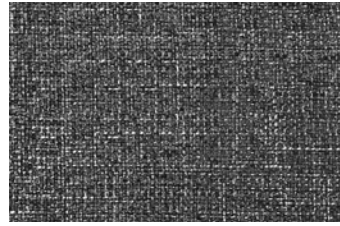
# COCO | AWM HOUSE RANGE



Coco Ash Brown



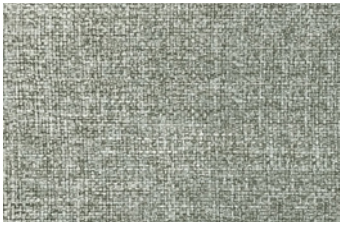
Coco Blush



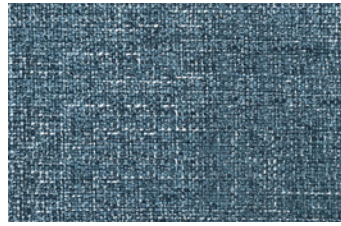
Coco Caviar



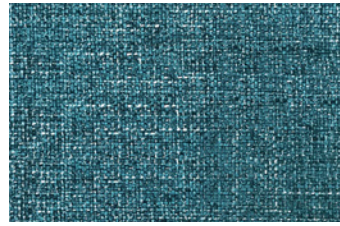
Coco Charcoal



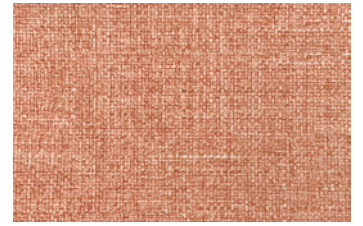
Coco Choc Mint



Coco Denim



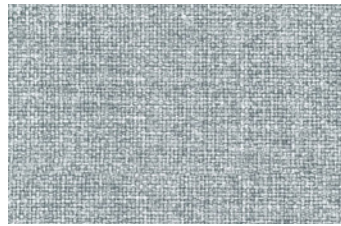
Coco Emerald



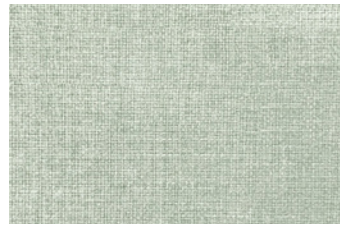
Coco Lychee



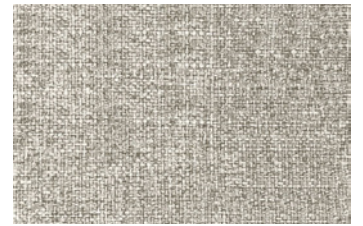
Coco Natural



Coco Powder Blue



Coco Sea Glass



Coco Silver



Coco Slate

# FINESSE | AWM HOUSE RANGE

## CATEGORY 1

### Specifications

Usage	Heavy Commercial
Composition	100% Polyester
Pattern Repeat	Plain
Width	144cm
Railroaded	Yes
Care Label	3U
Swish	Yes
Metres on roll (approx.)	45 metres
Price Code	Yellow
Fire Rated AS1530.3 Tested	Yes

### Test Results

Abrasion resistance - Martindale (ISO 12947)	72,500 cycles
Seam slippage (ISO 13936-2, Load 180)	Warp: 3.6mm, Weft: 3.3mm
Pilling resistance (ISO 12945-2)	4
Colourfastness to light (ISO 105-B02, blue std 6)	Greater than 6
Colourfastness to rubbing (ISO 105-X12:1993)	Dry: 5, Wet: 4/5
Free and hydrolysed formaldehyde (ISO 14184-1:1998)	Not detectable

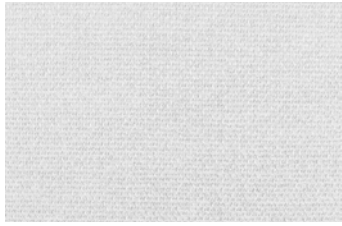
### Fire Rating AS1530.3 Results

Ignition Time	Standard Error: 0.34, Mean: 8.78 min
Flame Propagation Time	Standard Error: Nil, Mean: Nil sec
Heat Release Integral	Standard Error: 4.1, Mean: 58.8 kJ/m2
Smoke Release, log d	Standard Error: 0.0540, Mean: -0.8718
Optical Density, d	Mean: 0.1397 / Metre
Number of Specimens Tested and Ignited	6

### Regulatory Indices:

Ignitability Index	11 (Range 0-20)
Spread of Flame Index	0 (Range 0-10)
Heat Evolved Index	2 (Range 0-10)
Smoke Developed Index	5 (Range 0-10)

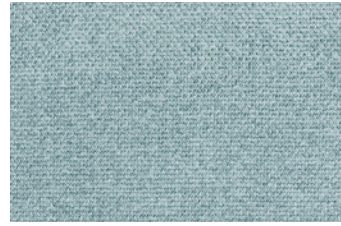
# FINESSE | AWM HOUSE RANGE



Finesse Alloy



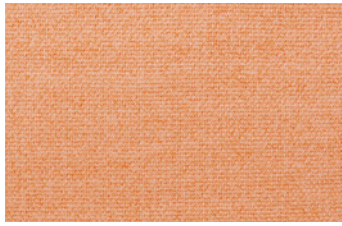
Finesse Azure



Finesse Cameo



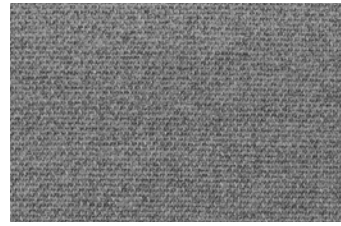
Finesse Coconut



Finesse Coral



Finesse Driftwood



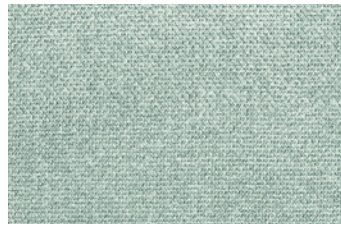
Finesse Flint



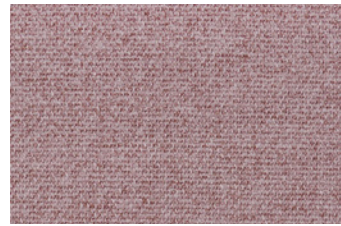
Finesse Hedge



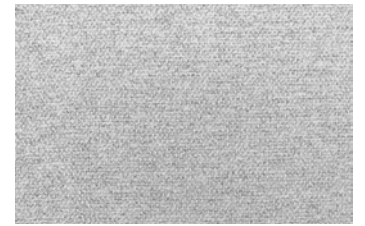
Finesse Hunter



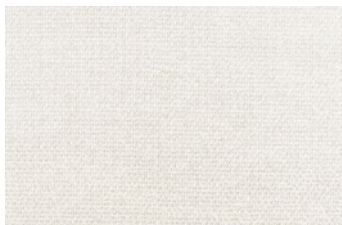
Finesse Mint



Finesse Musk



Finesse Nickel



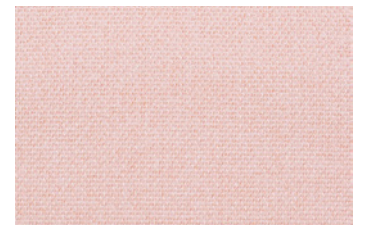
Finesse Parchment



Finesse Pebble



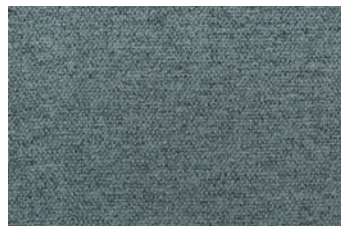
Finesse Pewter



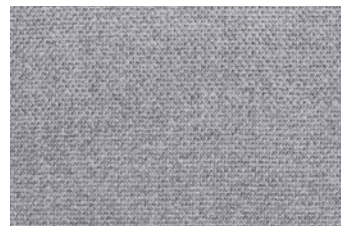
Finesse Shell



Finesse Slate



Finesse Storm



Finesse Thistle



Finesse Wattle

# PANIER | JAMES DUNLOP

## CATEGORY 1

Suitable for Workstation Screens

### Specifications

Usage	Heavy Commercial
Composition	100% Polyester
Pattern Repeat	Plain
Width	144cm
Railroaded	Yes
Care Label	3U
Swish	Yes
Metres on roll (approx.)	45 metres
Price Code	Yellow
Fire Rated AS1530.3 Tested	Yes

### Test Results

Abrasion resistance - Martindale (ISO 12947)	72,500 cycles
Seam slippage (ISO 13936-2, Load 180)	Warp: 3.6mm, Weft: 3.3mm
Pilling resistance (ISO 12945-2)	4
Colourfastness to light (ISO 105-B02, blue std 6)	Greater than 6
Colourfastness to rubbing (ISO 105-X12:1993)	Dry: 5, Wet: 4/5
Free and hydrolysed formaldehyde (ISO 14184-1:1998)	Not detectable

### Fire Rating AS1530.3 Results

Ignition Time	Standard Error: 0.34, Mean: 8.78 min
Flame Propagation Time	Standard Error: Nil, Mean: Nil sec
Heat Release Integral	Standard Error: 4.1, Mean: 58.8 kJ/m2
Smoke Release, log d	Standard Error: 0.0540, Mean: -0.8718
Optical Density, d	Mean: 0.1397 / Metre
Number of Specimens Tested and Ignited	6

### Regulatory Indices:

Ignitability Index	11 (Range 0-20)
Spread of Flame Index	0 (Range 0-10)
Heat Evolved Index	2 (Range 0-10)
Smoke Developed Index	5 (Range 0-10)

# PANIER | JAMES DUNLOP



Panier Brick



Panier Charcoal



Panier Cloud



Panier Cobblestone



Panier Dove



Panier Ebony



Panier Emerald



Panier Grapefruit



Panier Ink



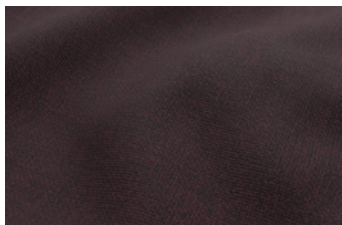
Panier Macaroon



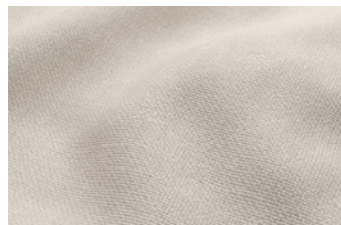
Panier Oyster



Panier Pewter



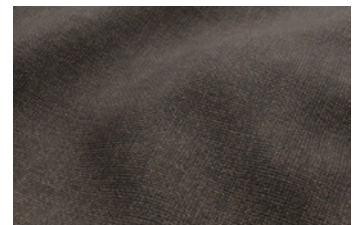
Panier Plum



Panier Shell



Panier Teal



Panier Truffle

# ZEST | AWM HOUSE RANGE

## CATEGORY 1

### Specifications

Usage	Heavy Commercial
Composition	80% Polyvinyl Chloride, 20% Polyester
Pattern Repeat	Plain
Width	137cm
Railroaded	Yes
Care Label	ZEST PVC
Swish	No
Metres on roll (approx.)	25 metres
Price Code	Yellow
Fire Rated AS1530.3 Tested	Yes

### Test Results

Abrasion resistance - Martindale (ISO 12947)	150,000 cycles
Seam slippage (ISO 13936-2, Load 180)	Warp: 2.3mm, Weft: 2.8mm
Tensile strength - grab test (AS4878.6:2001 Mtd 2)	Warp: 636, Weft: 534
Tearing force (AS2001.2.10:1986)	Warp: 51.3, Weft: 46.8
Resistance to plasticizer migration (AS4878.10-2001)	0.6%
Loss of plasticizer (AS1441.8-1973)	0.7%
Elongation (AS1441.9:1973)	Warp: 27.7, Weft: 79.0
Stretch set (AS1441.9:1973)	Warp: 2.9, Weft: 7.8
Colourfastness to light (ISO 105-B02, blue std 6)	Greater than 6
Colourfastness to rubbing (ISO 105-X12:1993)	Dry: 5, Wet: 5
Colourfastness to perspiration, alkaline (ISO 105-E04:2013)	Colour change: 5, Staining Multifibre: 5
Colourfastness to bleaching-hypochlorite (AS2001.4.11-1982)	Colour change: 5
Free and hydrolysed formaldehyde (ISO 14184-1:1998)	Not detectable

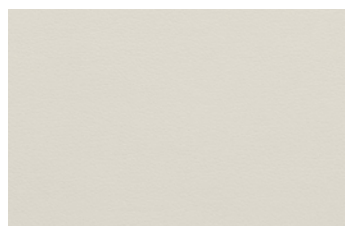
### Fire Rating AS1530.3 Results

Ignition Time	Standard Error: 0.88, Mean: 4.62 min
Flame Propagation Time	Standard Error: Nil, Mean: Nil sec
Heat Release Integral	Standard Error: 7.3, Mean: 37.0 kJ/m <sup>2</sup>
Smoke Release, log d	Standard Error: 0.0900, Mean: -0.7259
Optical Density, d	Mean: 0.2206 / Metre
Number of Specimens Tested and Ignited	9

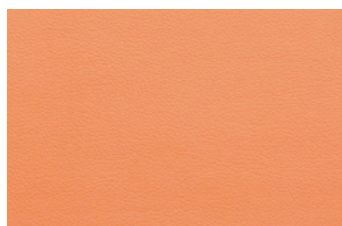
### Regulatory Indices:

Ignitability Index	15 (Range 0-20)
Spread of Flame Index	0 (Range 0-10)
Heat Evolved Index	1 (Range 0-10)
Smoke Developed Index	5 (Range 0-10)

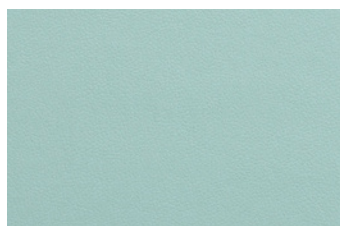
# ZEST | AWM HOUSE RANGE



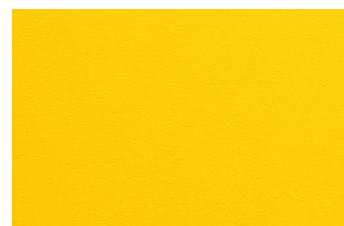
Zest Alaska



Zest Amber



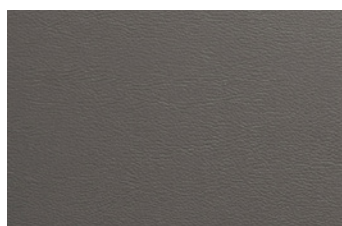
Zest Aqua



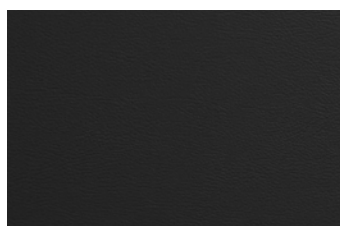
Zest Canary



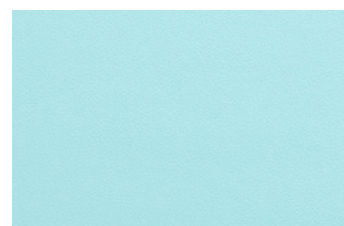
Zest Cardinal



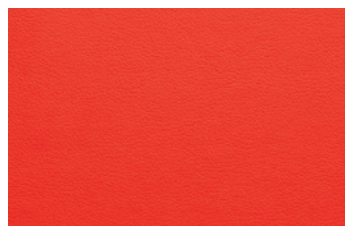
Zest Castlerock



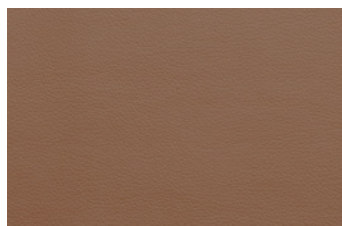
Zest Caviar



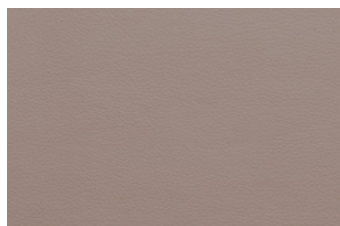
Zest Celeste



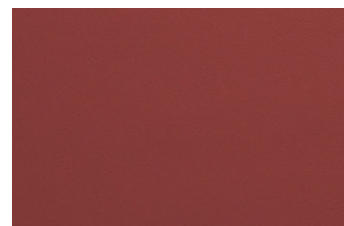
Zest Cherry



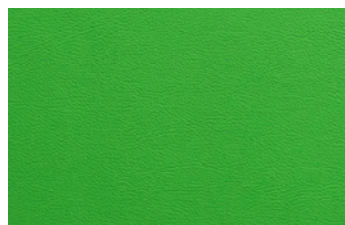
Zest Chocolate



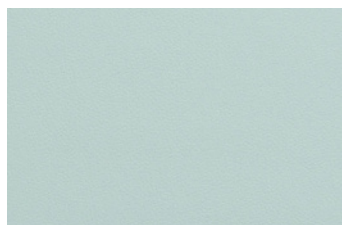
Zest Doe



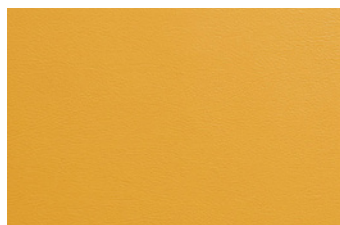
Zest Garnet



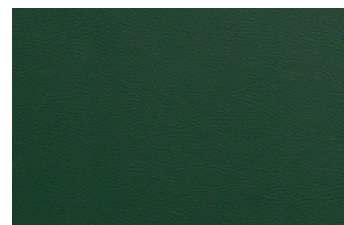
Zest Greenery



Zest Haze



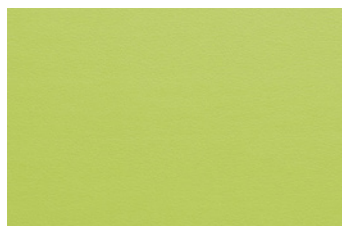
Zest Honey



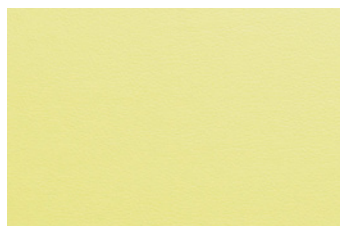
Zest Hunter



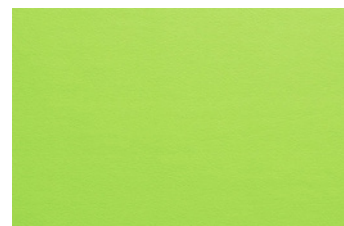
Zest Kangaroo



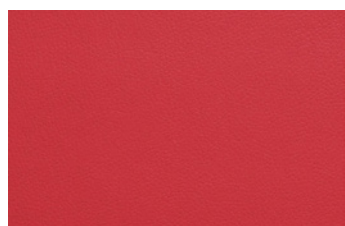
Zest Leaf



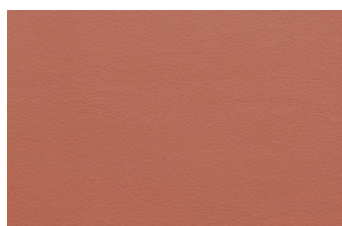
Zest Lemon



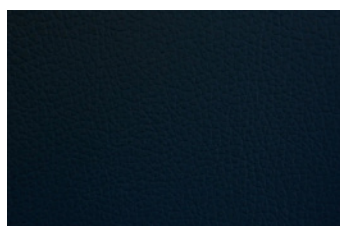
Zest Lime



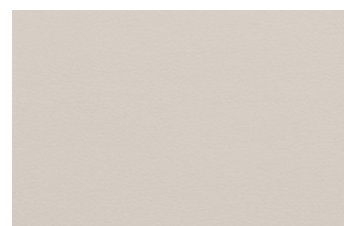
Zest Lipstick



Zest Marsala



Zest Midnight

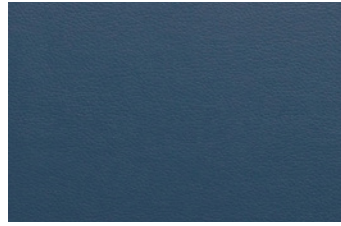


Zest Moonrock

# ZEST | AWM HOUSE RANGE



Zest Alaska



Zest Ocean



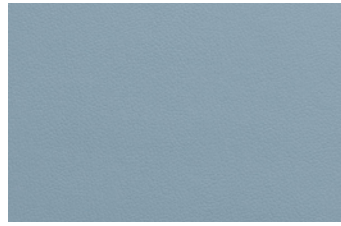
Zest Ochre



Zest Peacock



Zest Pebble



Zest Powder Blue



Zest Royal



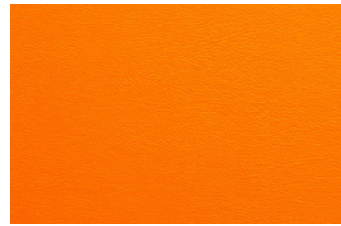
Zest Shell



Zest Silver







Zest Snow



Zest Tangy

# AUGUSTUS | WARWICK

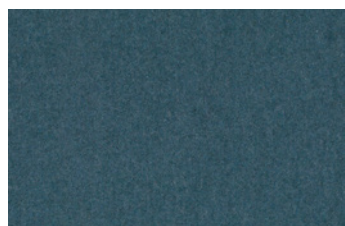
## CATEGORY 3

Collection (s)	Augustus
Colour (s)	Aegean, Amazon, Armour, Birch, Blush, Candy, Chili, Copper, Dew, Earth, Ebony, Ecru, Eggplant, Flint, Fuchsia, Fudge, Glacier, Grey, Gunmetal, Ink, Ladybird, Lagoon, Lime, Linen, Madder, Marmalade, Marshmallow, Meadow, Midnight, Mustard, Ocean, Olive, Pacific, Pimpernel, Plum, Porcelain, Pumice, Reef, Russet, Seaglass, Sunshine, Thistle, Turmeric, Tuscany, Willow, Wolf, Zinc
Product Type (s)	Drapery   Upholstery (Heavy Commercial )
Attributes	Encore Recycled
Styles	Plain, Texture, Modern, Industrial
Composition	70% Recycled Wool 25 % Polyamide 5 % Acrylic
Pattern Match	No
Pattern Repeat (cm)	Plain
Railroaded	Plain Fabrics marked Railroaded 'Plain' can be cut in either direction at the discretion of the manufacturer, and in consultation with the customer's preference. Fabric is sampled in the direction it comes up the roll (Non Railroaded ).
Continuous	No
Self-Weighted	No
Width (cm)	150
Roll Size (approx)	50m
Weight (gsm)	392
Origin	European
Stain Repellent	No
FIAA Care Label	<u>FIAA Care Label 3 – Non Pile Fabrics</u>
WCAA Care Label	<u>WCAA Care Label 2</u>
Usage	 Upholstery  Drapery  Cushion  Lamp Shade         Not suitable for roman blinds
Guarantee	3 Years in accordance with our product type and care instructions

## Test Results

Martindale (ISO 12947, 12kPA)	150,000 Cycles
Seam Slippage (mm) (ISO 13936-2, Load 180 )	Warp 3.3, Weft 2.9
Pilling Resistance (ISO 12945-2 )	4/5
Colourfastness to Light Xenon arc (ISO 105-B02, blue std 6 )	> 6
Colourfastness to Rubbing (ISO 105-X12)	Dry 5, Wet 4/5
Dimension Change - Laundering (%) (ISO 5077/ISO 6330.7BA )	Warp -1.4, Weft -4.8
Dimension Change - Hanging (%) (AS2663.1.B )	Warp 0.2, Weft 0.1
Free and Hydrolysed Formaldehyde (ISO 14184-1:1998)	Not Detectable
Flammability AS/NZS 1530.2 - 1993 Flammability Index (0-100) Spread Factor (0-40) Heat Factor (0 upward)	34 Length 24, Width 21 Length 10, Width 8
Flammability AS/NZS 1530.3 - 1999 Ignitability (0-20 ) Spread of Flame (0-10) Heat Involved (0-10) Smoke Developed (0-10)	7 0 0 3
Group Number AS5637.1	2

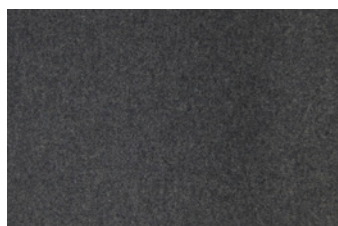
# AUGUSTUS | WARWICK



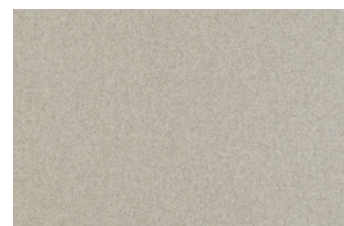
Augustus Aege



Augustus Amazon



Augustus Armour



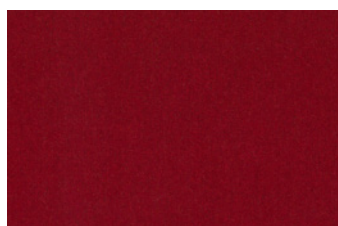
Augustus Birch



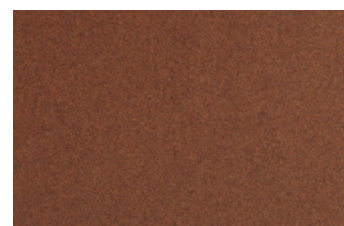
Augustus Blush



Augustus Candy



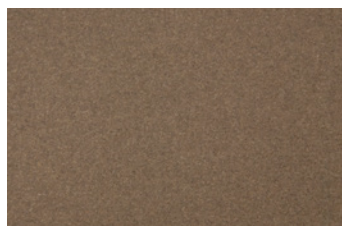
Augustus Chili



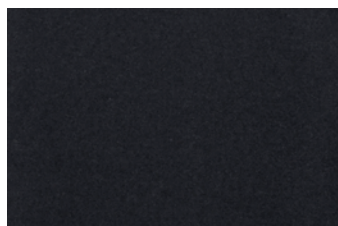
Augustus Copper



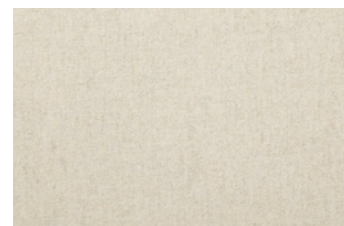
Augustus Dew



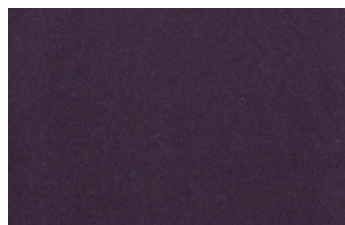
Augustus Earth



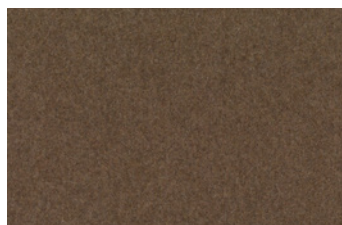
Augustus Ebony



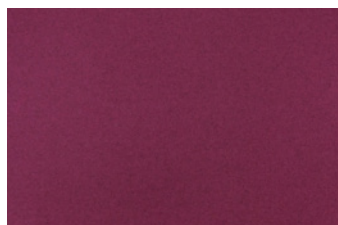
Augustus Ecru



Augustus Eggplant



Augustus Flint



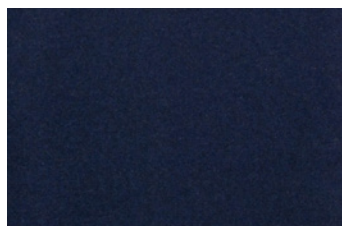
Augustus Fuchsia



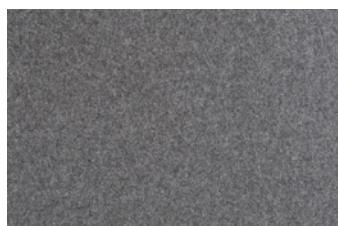
Augustus Fudge



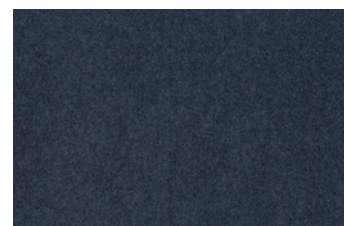
Augustus Glacier



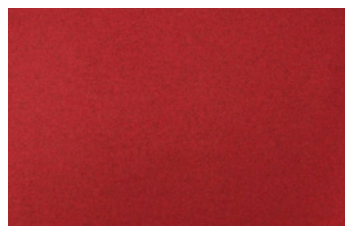
Augustus Midnight



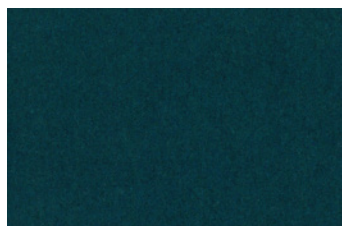
Augustus Gunmetal



Augustus Ink



Augustus Ladybird



Augustus Lagoon

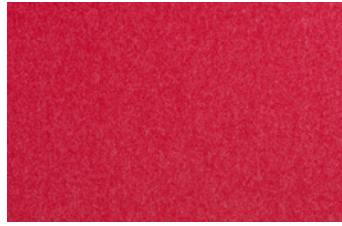


Augustus Lime

# AUGUSTUS | WARWICK



Augustus Linen



Augustus Madder



Augustus Marmalade



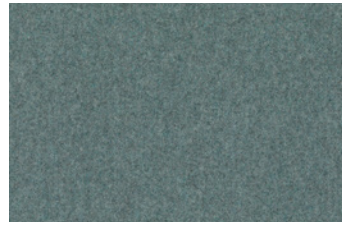
Augustus Mashmellow



Augustus Meadow



Augustus Musturd



Augustus Ocean



Augustus Olive



Augustus Pacific



Augustus Pimpernel



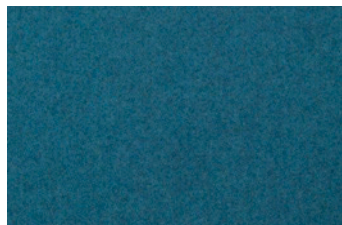
Augustus Plum



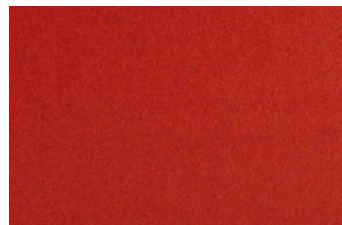
Augustus Porcelain



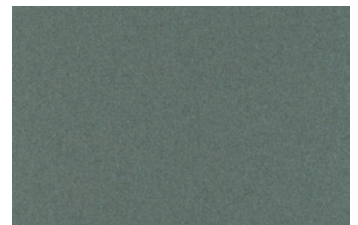
Augustus Pumice



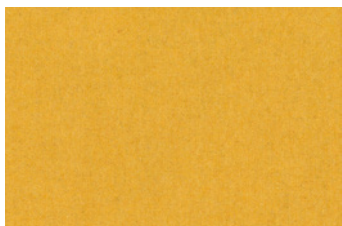
Augustus Reef



Augustus Russet



Augustus Seaglass



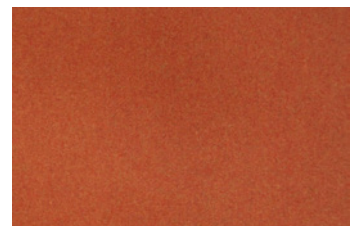
Augustus Sunshine



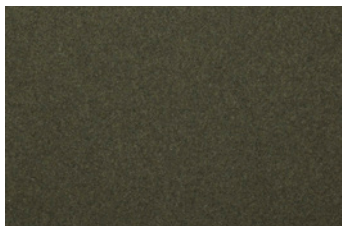
Augustus Thistle



Augustus Turmeric



Augustus Tuscany



Augustus Willow



Augustus Wolf



Augustus Zinc

HOUSE FABRIC RANGE

E. sales@awm.net.au  
P. 1300 475 217

Sydney Showroom  
118 Commonwealth St  
Surry Hills, NSW 2010

Fairfield Factory  
9 Malta St  
Fairfield East, NSW 2165

Melbourne Showroom  
132-134 Adderley St  
West Melbourne, VIC 3003

A  
.A

**AWM.  
AMAROO**

Colour and swatches shown in this document are for reference only and may differ in actuality. Copyright AWM Amaroo. All concepts, photography and ideas contained within this document are private and confidential. They must not be reproduced in any way or form and remain the intellectual property of AWM. All products are registered designs with IP Australia.  
AWM.NET.AU