



QIKSILVA has been designed with a minimalist approach in mind. Compact and sleek, it is the designer's choice.

Taking up a minimal amount of desk space, the QIKSILVA is used in conjunction with the OE Elsafe QIKFIT range and provides a total solution for power, USB Fast Charging, data and AV connectivity at the workstation.

By combining with the quick release brackets, this rail becomes ideal for hot-desking, training tables or any quick relocation (see overleaf).

The quick release bracket also allows for above desk fixing or repositioning of the rail. This helps to avoid any OH&S issues of staff crawling under desks.

QIKSILVA can be custom made to accommodate the most stringent of customer specifications.

COLOURS:

Natural anodised aluminium body with white, grey or black fascias and end caps.

Black powdered coated with black fascias and end caps. Other colours available on request.



FEATURES

Configuration:

Power only / Data only / Combined (Power & Data)

Increased flexibility:

All QIKSILVAs are supplied with either 800mm or 1400mm cables exiting the rear. Snap-outs in the end-caps allow the cables to be routed right or left as required (except where quick release brackets are used) and this can be decided on site.

Soft Wired Power:

Cables are terminated to Wieland GST installation couplers that allow for easy reconfiguration of the office during reconfiguration.

Soft Wired Data:

As well as soft wired power, QIKSILVA can be fitted with soft wired data.

Soft Fixing:

The QIKSILVA comes with many different bracket options to suit the desired installation requirement. The brackets have been designed to allow for easy reconfiguration of the workstation. Please see 'Fixing Options' for further information.

Optional Cable:

Interconnecting cables can be supplied with 10A 3pin plugs to allow for installation to a standard socket outlet. NB: if the Qiksilva has more than 2GPO's the thermal overload will be required in the interconnecting cable.

Testing:

100% testing - continuity, polarity & earth.

Custom Rails:

Custom rails can be made to suit special applications. Contact OE Elsafe for technical advice and pricing.

Standard Unit Lengths

QS25	141.5mm	2 GPO or up to 5 Data (½ tiles)
QS45	247mm	4 GPO or 2 GPO & up to 4 Data (½ tiles)
QS70	383mm	4 GPO & up to 4 data (½ tiles)

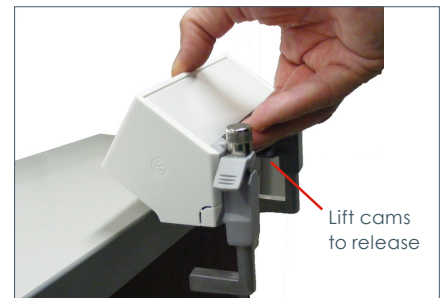
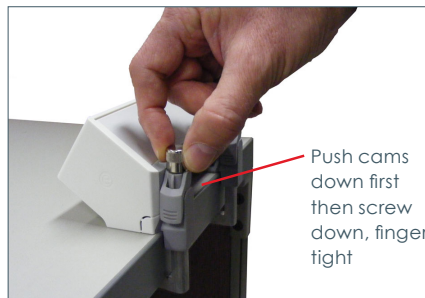
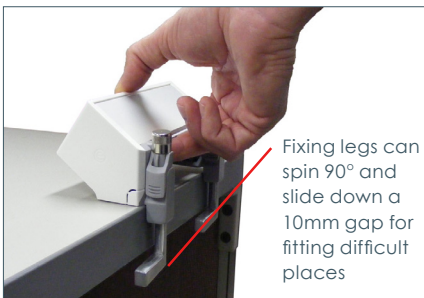
Data tiles accept RJ45 (no need for bezels)

Fixing Options

QCB	Standard Desk Bracket - finger tightened from under desk. Table thickness 15-35mm.
QRB	Quick Release Brackets - for above desk fixing and fast relocation. Table thickness 13-45mm. Comes with rubber pads to be fitted on-site.
QSF	Screen Fix
QRM	Tool Rail Mount
QUU	Combined 'Up and Under' Desk Bracket

Other bracket fixing on application.

QUICK RELEASE BRACKETS



STANDARD DESK BRACKETS



COMBINED 'UP & UNDER' BRACKETS



OE Elsafe has a policy of continuous development and we reserve the right to change specifications without notice. All dimensions given in this specification are nominal and are for reference purposes only.