



POP-UP MODULE

Tiny, Versatile and Powerful

CMS Pop-Up is an In-desk module that provides quick and practical access to Power and/or USB.

The intuitive design combines the practical accessibility of an on-desk rail, whilst maintaining the clutter-free design of a recessed module.

Purposed to compliment single workstations, hot-desks, or training rooms, the Pop-Up can be configured to deliver a combination of Power and/or USB outlets to suit any commercial office, hospitality or residential application.

Colours Available

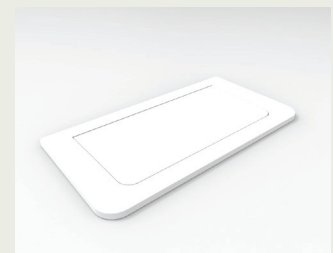
White Black

Key Features

- Spring mechanism enables touch to open/close
- Clean and unobtrusive profile when retracted
- Drops into a simple rectangular cut-out
- Compatible with a range of CMS outlet solutions
- Fully segregated for Power and/or USB



Pop Up - Lid Open



Pop-Up - Lid Closed

Product Details

PU02R10D**	Pop-Up c/w 2x Auto Switched GPO (Rotated) Incl. 1000mm Tag Lead & L3D Splitter (Cut-Out: 200mm x 100mm)
PU02RG15**	Pop-Up c/w 2x Auto Switched GPO (Rotated) Incl. 1500mm Lead With 3 Pin Plug (Cut-Out: 200mm x 100mm)
PU01RU10D**	Pop-Up c/w 1x Auto Switched GPO With 2 x USB-A Fast-Charge Outlets (30W Shared) Incl. 1000mm Tag Lead & L3D Splitter (Cut-Out: 200mm x 100mm)
PU01RUG15**	Pop-Up c/w 1x Auto Switched GPO With 2 x USB-A Fast-Charge Outlets (30W Shared) Incl. 1500mm Lead With 3 Pin Plug (Cut-Out: 200mm x 100mm)
PU01RUAC310D**	Pop-Up c/w 1x Auto Switched GPO With USB A/C Fast-Charge Outlets (30W Shared) incl. 1000mm Tag Lead & L3D Splitter (Cut-Out: 200mm x 100mm)
PU01RUAC3G15**	Pop-Up c/w 1x Auto Switched GPO With USB A/C Fast-Charge Outlets (30W Shared) Incl. 1500mm Lead With 3 Pin Plug (Cut-Out: 200mm x 100mm)
PU01RUAC6510D**	Pop-Up c/w 1x Auto Switched GPO With USB A/C Fast-Charge Outlets (65W shared) Incl. 1000mm Tag Lead & L3D Splitter (Cut-Out: 200mm x 100mm)
PU01RUAC65G15**	Pop-Up c/w 1x Auto Switched GPO with USB A/C Fast-Charge Outlets (65W shared) Incl. 1500mm Lead With 3 Pin Plug (Cut-Out: 200mm x 100mm)

Notes:

- ** Denotes Standard Colours: Black (BK), White (WT)