



PIP2 Flush Mount



PIP3 Ergonomic 8° Angle Mount

PIP2 and PIP3 offer a minimalist, low-profile power solution for desktops. PIP2 and PIP3 come with the option to be installed either flush or at an ergonomically designed 8° angle to enhance user access.

Choose any combination of AC power, TUF-R USB mobile and laptop charging, or wireless fast charging (wireless will be available in early 2024).

All OE Elsafe AC power sockets are autoswitched for a clean look and efficient operation.

OE's award-winning TUF-R USB charging modules feature the world's first reversible Type A-Port, enabling a first-time connection every time, cutting down on wear, and extending the life of the module and the product it is fitted into.

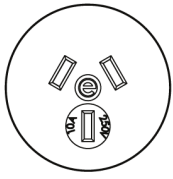
In the event of end-user damage, TUF-R USB charging modules are quick to replace without the need to turn off the power or call an electrician. The unique and patented benefit of being replaceable makes TUF-R perfect for areas of high usage.

**FEATURES:**

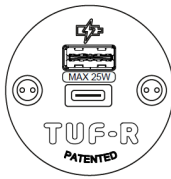
- Install flush (minimalist) or at an ergonomic 8° angle for enhanced user access.
- Accommodates OE's award-winning TUF-R (replaceable) USB charging modules
- TUF-R USB modules featuring OE's unique reversible type A-Port
- Developed by the OE Group, incorporating advanced USB technologies

pip2 /pip3 TECHNICAL

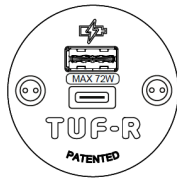
COMMON MODULAR COMPONENTS



AUS / NZ GPO



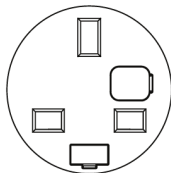
TUF-R (25W)
USB Charger
Blue LED



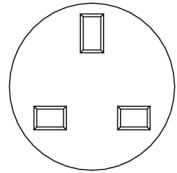
TUF-R HP (72W)
USB Charger
Green LED



Wireless Charger
available early 2024



UK Fused



UK Unfused



PIP3 Panel Mount

CONFIGURATIONS

Choose any combination of AC power, TUF-R USB mobile or laptop charging, or wireless fast charging

CONSTRUCTION

Body and back – Polycarbonate

INTEGRAL FIXINGS

Screw clamps for surfaces 3mm – 30mm thick

COLOURS

- Socket fascias White or Black
- Body & back mouldings – BLACK
- Front Fascia – White or Black

POWER CORD OPTIONS

- Hardwired power cord to GST18-3;
- Hardwired power cord to JCOupler

QUALITY AND TESTING

All PIP units are manufactured using ISO9001 quality-controlled components and practices and are 100% tested before dispatch as follows:

- Visual – Configuration & appearance
- Power sockets – Continuity, polarity, insulation and earth
- USB charger – Output voltage & resistance

PIP 2 and PIP 3 are designed and intended for commercial use



TUF-R TECHNICAL



TUF-R and TUF-R HP are quick and simple to replace without the need for an electrician or turning off the power. The unique and patented benefit of being replaceable makes TUF-R perfect for areas of high usage.

CLICK to see how quick and easy TUF-R / TUF-R HP is to replace.

Upgrading or replacing the TUF-R module and not the whole product saves time, money, and significantly reduces waste.

Being replaceable also allows TUF-R to be upgraded in the future to incorporate the latest technologies.



TUF replacing tool.



Insert the 'snake eye' bit into the tool as shown.



Use the tool to unscrew the 'snake eye' screws.



Lift off the TUF fascia



Insert the second part of the TUF replacing tool into the TUF as shown, until a click is heard.



Pull the TUF cartridge out from the unit.



Unwrap and insert the new TUF cartridge, paying close attention to the orientation of the cartridge to the blue housing.



Push the cartridge into the blue housing until a click is heard.



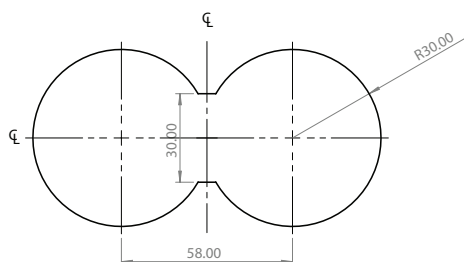
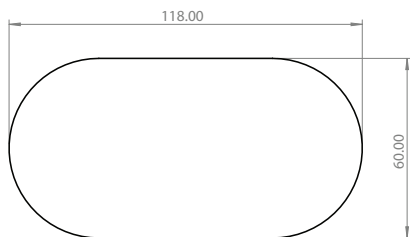
Place the TUF fascia back into position.



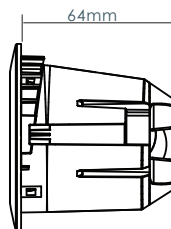
Using the TUF replacing tool and 'snake eye' bit, screw the snake eye screws back into place

pip2 /pip3 INSTALLATION

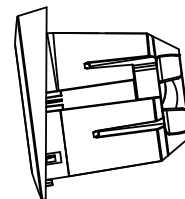
PIP2 CUTOUT DIMENSIONS



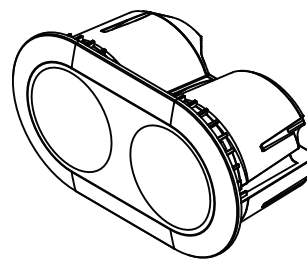
HOLESAW CUTOUT
58mm PITCH BETWEEN 2 x 60mm HOLES
FLAT CUT TO 30mm(-0+2mm)



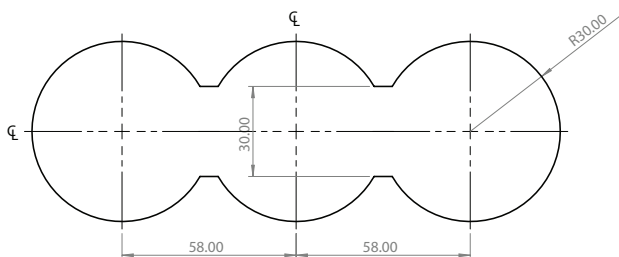
PIP2 FLUSH
INSTALLATION FASCIA



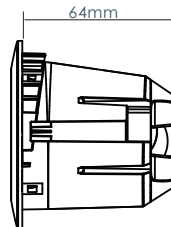
PIP2 8° ANGLE
INSTALLATION FASCIA



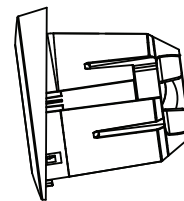
PIP3 CUTOUT DIMENSIONS



HOLESAW CUTOUT
58mm PITCH BETWEEN 3 x 60mm HOLES
FLATS CUT TO 30mm(-0+2mm)



PIP3 FLUSH
INSTALLATION FASCIA



PIP3 8° ANGLE
INSTALLATION FASCIA

