

# Flo Plus Dual Arm

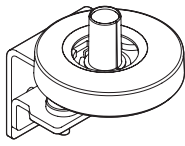
Installation Guide



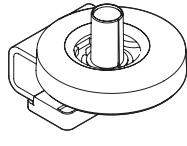
## FIT DESK FIXING TO WORKSURFACE

1

Follow separate worksurface fixing installation instructions



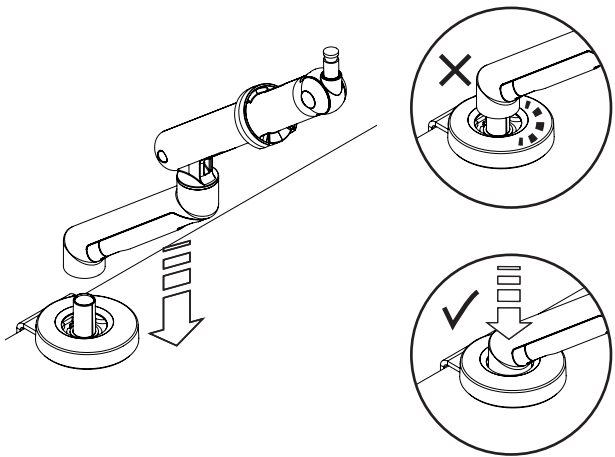
**FLO PLUS SPLIT CLAMP**  
DYN/026/A35



**FLO PLUS TOP MOUNT CLAMP**  
DYN/026/A34

## FIT MONITOR ARM TO CLAMP

2



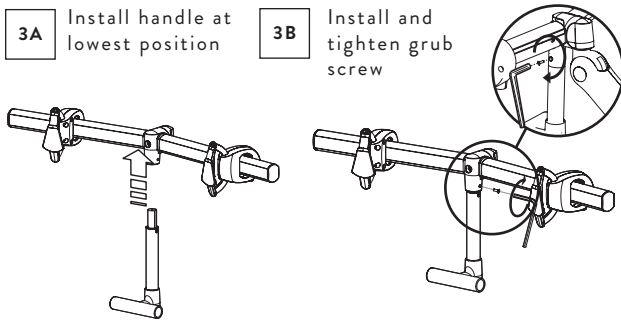
### IMPORTANT

Ensure that arm is pushed fully down onto clamp

## INSTALL HANDLE TO MONITOR BEAM

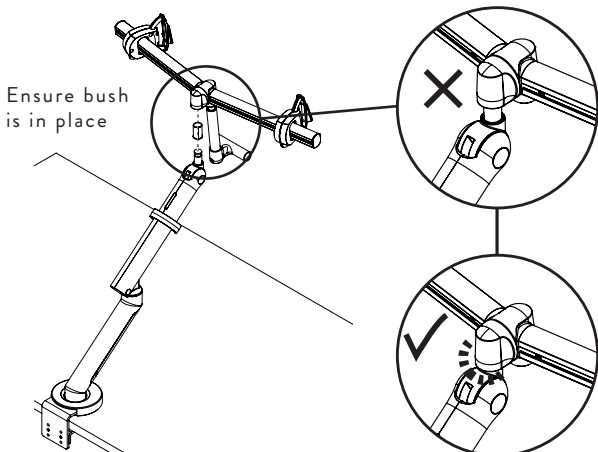
3

- 3A** Install handle at lowest position
- 3B** Install and tighten grub screw



## FIT DUAL MOUNT BAR

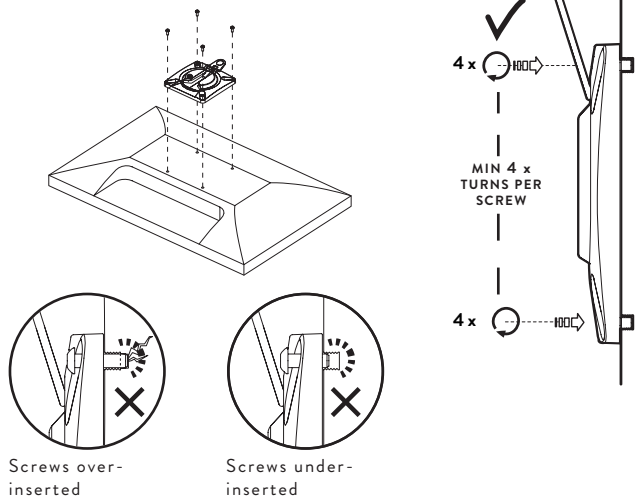
4



## ATTACH MONITOR MOUNT PLATE TO MONITORS

5

Use screws supplied



### IMPORTANT

It is the responsibility of the installer to ensure all mounting screws are properly engaged with a minimum of 4 x 360° turns into the display. Under or over insertion may cause damage to the equipment or injury to personnel.

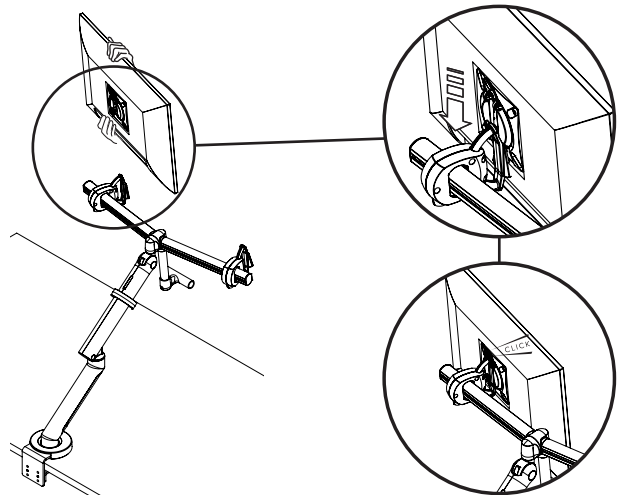


### IMPORTANT

If you wish to change screen orientation see step 15 overleaf

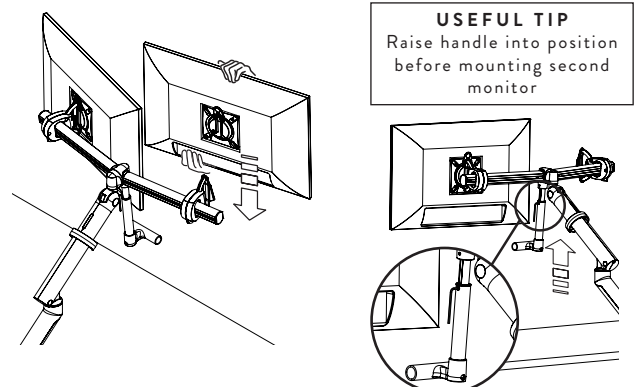
## MOUNT FIRST MONITOR TO ARM

6



## MOUNT SECOND MONITOR ARM

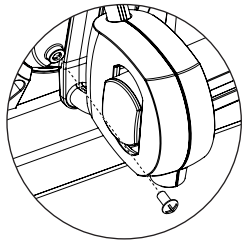
7



OPTIONAL SECURITY SCREW

8

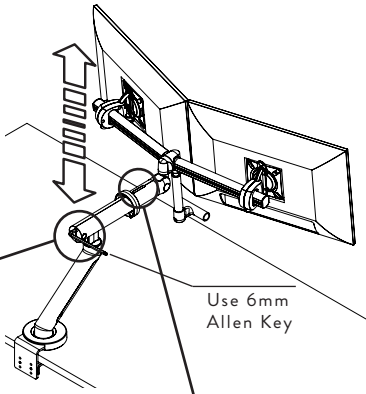
Security screw locks monitor to arm



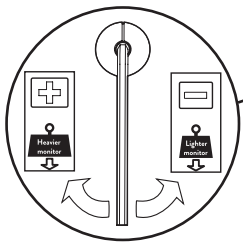
ADJUST ARM TO SUIT WEIGHT OF MONITORS

9

8A Turn adjuster screw until monitor 'floats' in all height positions

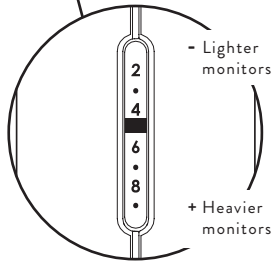


Use 6mm Allen Key



8B The arm setting indicator allows for quick installation of multiple monitors

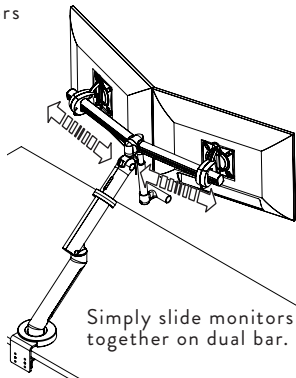
You can quickly 'dial in' to the same setting, then if necessary, fine tune the adjustment to balance the monitor



ADJUST HORIZONTAL POSITION OF MONITORS

10

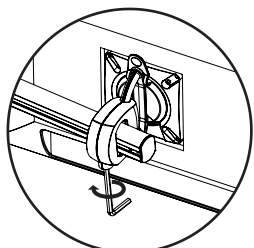
Position monitors side-by-side



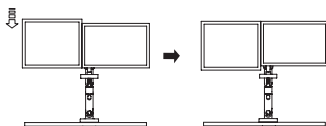
Simply slide monitors together on dual bar.

ALIGN MONITORS (IF NECESSARY)

11

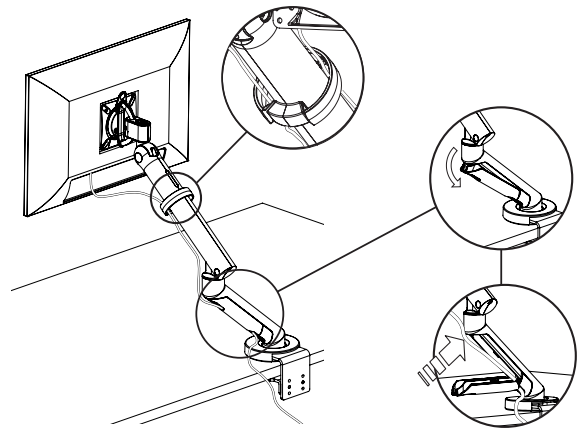


- Clockwise lowers monitor
- Anti-clockwise raises monitor



INSTALL CABLES

12

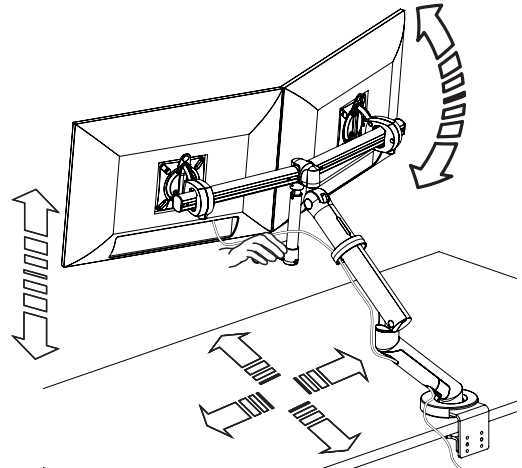


USEFUL TIP

Ensure you have allowed enough free cable for screen rotation

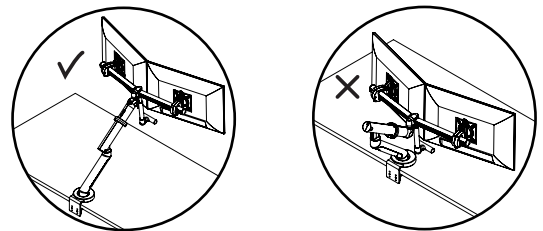
USING YOUR FLO PLUS ARM

13



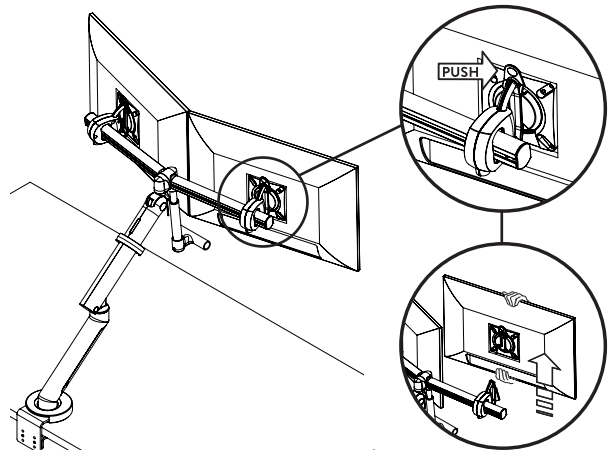
TO REMOVE MONITOR

14

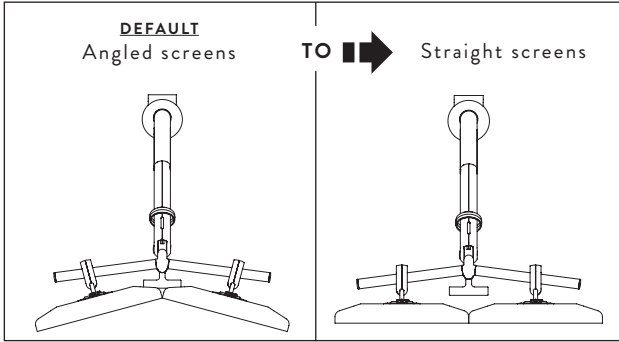


IMPORTANT

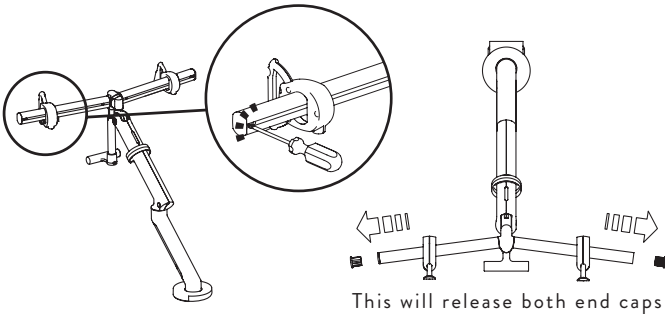
Raise arm to uppermost position before removing monitor otherwise it may spring up when unloaded.



**[OPTIONAL] CHANGE THE SCREEN ORIENTATION TO STRAIGHT**



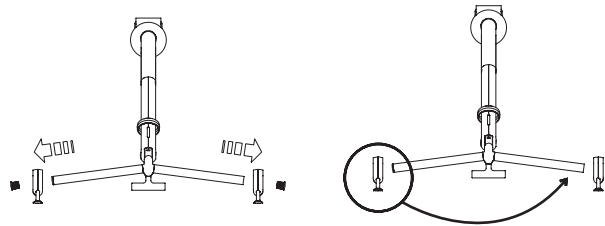
**15A** Insert screwdriver into first beam hole at both ends



This will release both end caps

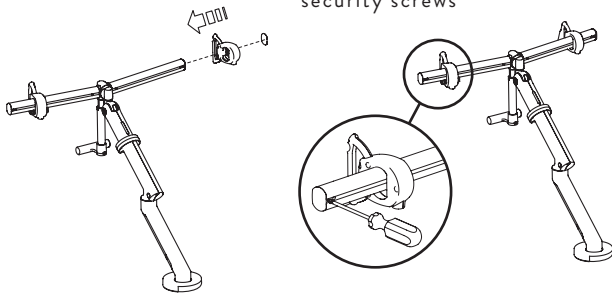
**15B** Slide the mount brackets off both ends

**15C** Swap bracket positions



**15D** Slide brackets and end caps back on

**[OPTIONAL]** Use screwdriver to install security screws



**WARNING**

- Ensure desk/work surface/wall/partition is suitable to take the weight of the arm/s and monitors.
- Do not use this product for any purpose other than that for which it was designed.
- Supported weight must not exceed 18kg (40lb) per arm.
- Hold the monitor tightly when making adjustments.
- Care should be taken to avoid trapping fingers.
- Do not dismantle or remodel the arms.
- Do not attach the monitor before assembling arm.
- Some monitors have recesses and may require spacers or a 75mm VESA plate.
- The screws supplied for the installation of the arm are supplied in good faith and with the intention that they will be used with the correct monitor, namely a monitor with VESA mounting holes. Please therefore check before attempting installation that you have the appropriate equipment on which to carry out the installation. CBS cannot be held liable for any damage caused to your equipment resulting from a failure to make this check. Please also carefully read the installation instructions to ensure correct fixing.

**MAINTENANCE AND INSPECTION**

- Ensure all screws are tightened and occasionally adjust if needed.
- Clean with a damp cloth, NO solvent.

**DISCLAIMER**

As part of Colebrook Bosson Saunders ongoing product improvement programme, the design of products may change without prior notice and details may vary from those illustrated.

**[OPTIONAL] INCREASE DUAL BAR FRICTION**

